

DT CRAWLER 28F



DT CRAWLER 92F

STANDARD EQUIPMENT

220V/380V power supply to the cage
 Auto levelling basket
 Auto-jacking/turntable levelling function
 Cage hook (max 300 kg / 660 lbs)
 Cage multifunction pin
 Cage rotation
 Dead man pedal both on the cage and on turntable controls
 Double telescopic extension booms
 Fully electronic proportional hydraulic controls driven by canBUS system
 Hands free intercom system ground/cage
 Memory function
 One click auto-closing function
 Remote management and diagnostic software
 Smooth movements, no flapping with brakes and ramps
 Variable outreach management
 Water sprinkler for cage protection

STANDARD COMPLIANCE

UNI EN 1777
 UNI EN 1846
 CE (european certification)

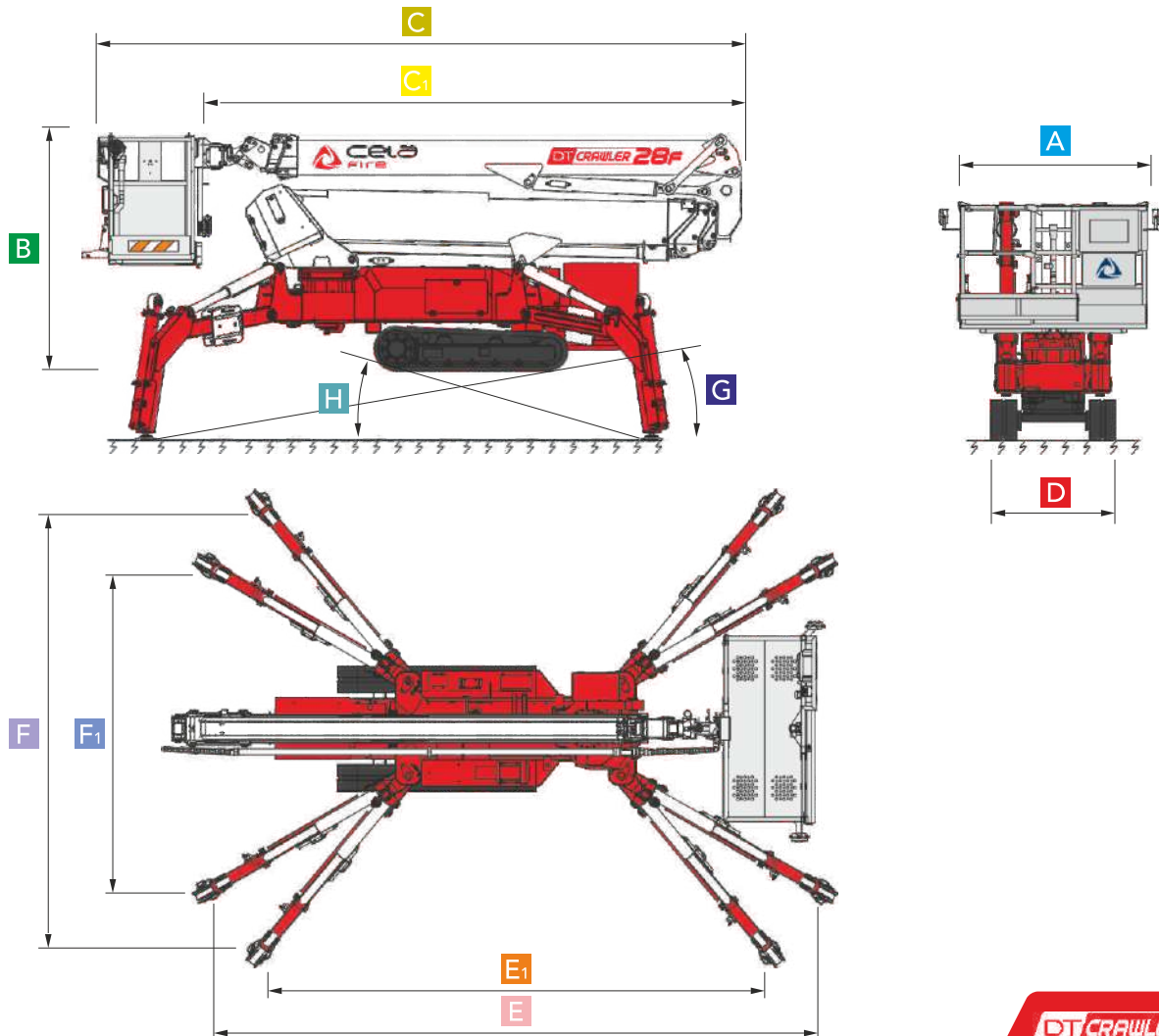


PERFORMANCES

	<i>metric</i>	<i>US</i>
Working height	28 m	91 ft 10 in
Horizontal outreach	14 m	45 ft 11 in
Up and over clearance	15,5 m	49 ft 3 in
Downreach	- 5,5 m	- 18 ft
Lift capacity	300 kg	660 lbs
Weight	5,3 T	11685 lbs
Water capacity	700 to 1000 l/min	180 to 260 GPM (US liquid)
Operating wind speed	12,5 m/s	71 fps

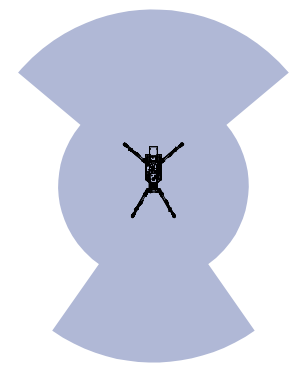
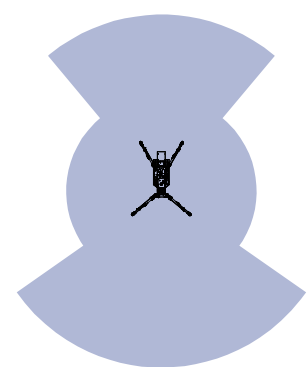
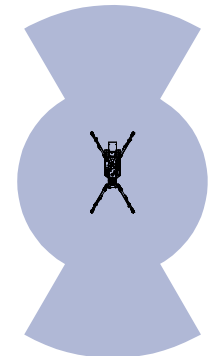
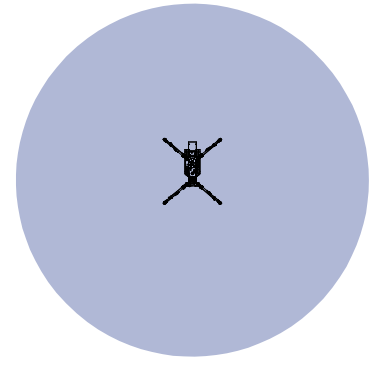
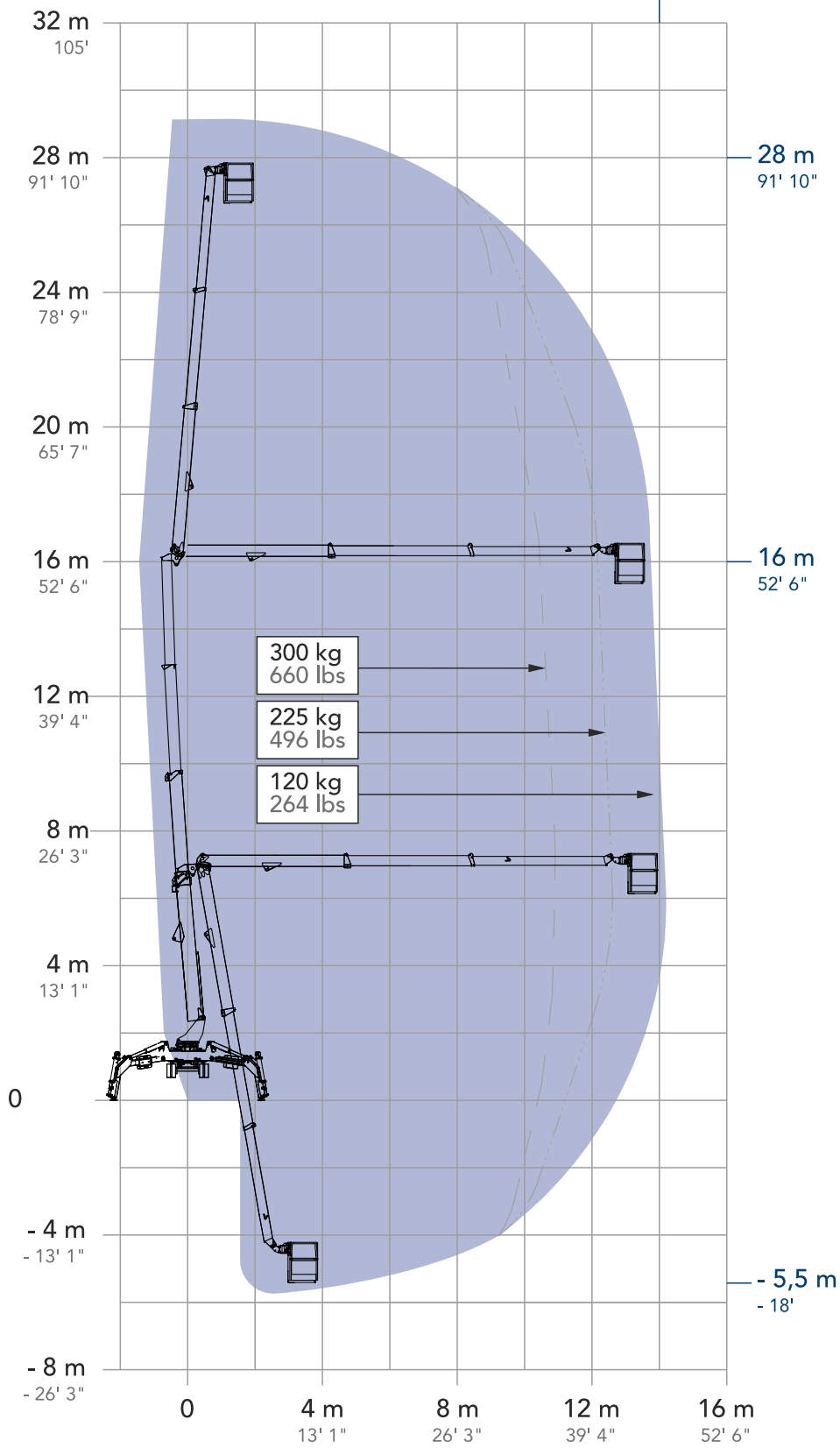
MEASUREMENTS

	<i>metric</i>	<i>US</i>
Foldable front platform	1150x250 mm	3 ft 9 in x 10 in
A Rescue cage size	1800x830x1180 mm	5 ft 11 in x 2 ft 7 in x 3 ft 11 in
B Height - stowed	2290 mm	7 ft 6 in
C₁ Length - basket off	5370 mm	17 ft 7 in
C Length - stowed	6225 mm	20 ft 5 in
D Width - stowed	1200 mm	3 ft 11 in
E₁ Length - outriggers footprint stowed	4895 mm	16 ft
E Length - outriggers footprint	5880 mm	19 ft 3 in
F₁ Width - outriggers footprint stowed	3105 mm	10 ft 2 in
F Width - outriggers footprint	4280 mm	14 ft
G Max stabilization front slope angle	10°	18%
H Max stabilization rear slope angle	15,6°	28%



360° CONTINUOUS

14 m
45' 11"



- 5,5 m
- 18'